

VICTORY RANGE

Fully Bespoke EV
Feeder Pillar Solutions



START A PROJECT

To find out more about our Victory Range of EV Power Solutions, or to start a project, please contact us now.

023 92 230604 | ev@icee.co.uk | www.icee-ev.co.uk

 ICEEMSLtd  @iceemsltd  ICEE-EV





Welcome...

Supporting EV Charger Installation, ICEE-EV have launched our Victory Range of EV Power Feeder Pillars, capable of being designed completely bespoke to meet your requirements.

As Electric Vehicles become more common across the United Kingdom, crucial EV Charge Stations need to be significantly more frequent, with fast, compatible charge points. Our Victory Range helps to distribute power to multiple chargers. Dive in to find out more.

HIGHLY SECURE

The Victory Range is designed with security in mind, which is why it comes as standard with a four point compression lock specification, keeping unwanted visitors out.

BESPOKE CAPABILITY

Our in-house design team can take your specification, and turn it into a compliant, fully functioning concept. Building bespoke can allow significant cost savings, while leaving scope for future upgrades and improvements.

STAINLESS STEEL

Engineered from 2mm Stainless Steel, our Feeder Pillar Range are manufactured to face the harshest weather conditions. Protection is of utmost importance, which is why all of our enclosures are coated in an AP120 Primer, before being powder coated*.

*Hot-Dip Galvanizing, available on request.



4 COLOUR OPTIONS



The Victory Range

Our EV Feeder Pillars are designed to efficiently distribute power to multiple EV charging stations within a system. Developed by our in-house design team, the range is fully compliant with industry standards and adaptable for both TT and PME earthing options. Additionally, we offer comprehensive site installation and maintenance services.

KEY ENCLOSURE FEATURES:

- Double Door, Four Point Compression Locked Cabinet
- Fully Integrated Panel build with DNO Space
- 18mm Marine Plywood Backboard Fitted
- Type 1+2 SPD Installed
- Three Removable Aluminium Gland Plates for Easy Cable Gland Connections
- Caters for Chargers from 7.4kW to 120kW
- PME Earthing as Standard
- Easy Termination, remove bottom panel and wire EV Charger into pre-wired WAGO Terminals
- Choose from four colours as standard, RAL9005, RAL6005, RAL9016 and 00A09.

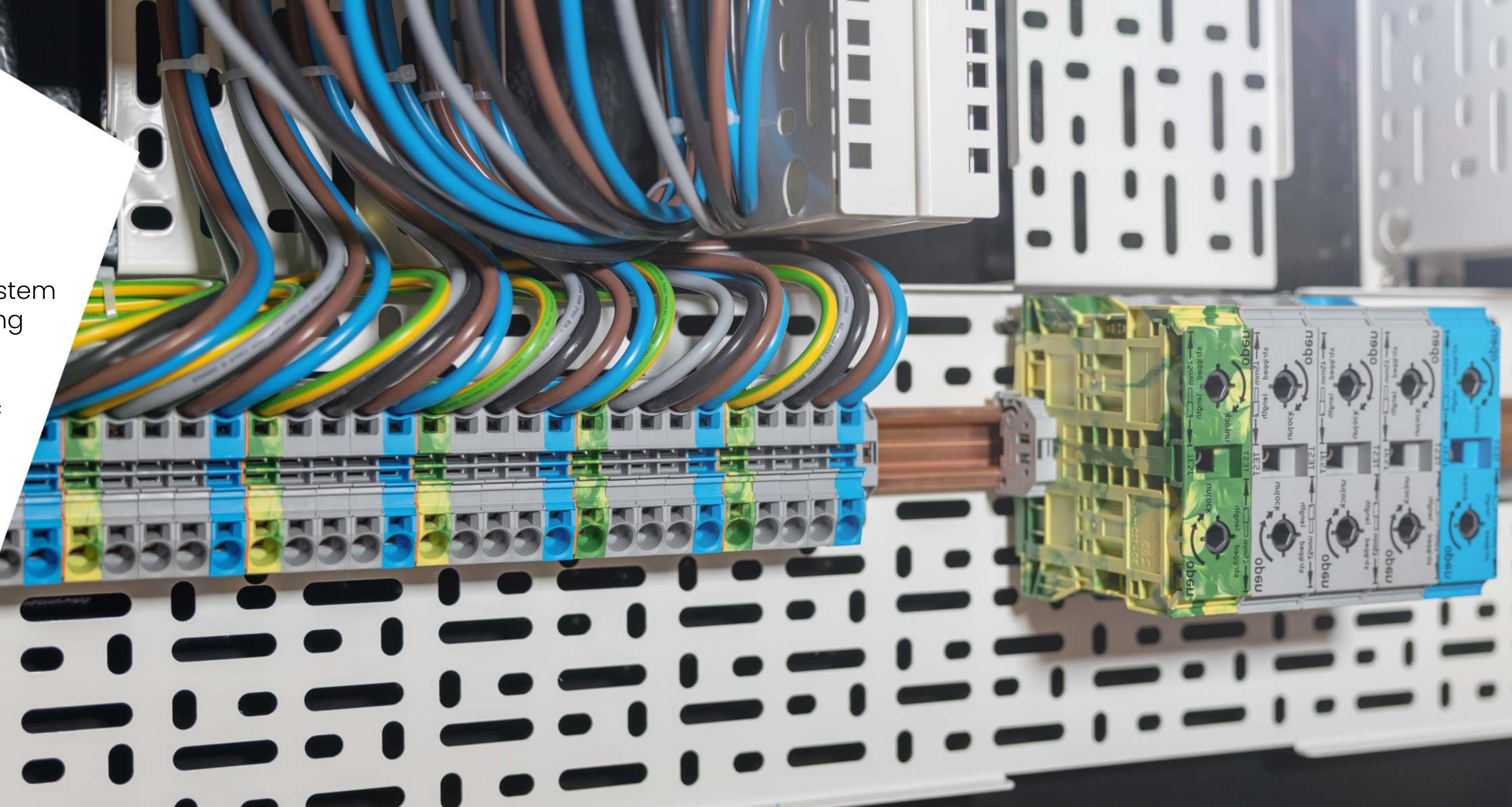
*Any RAL Colour available on request for an uplift in price.

The Victory Range comes as standard with a PME Earthing Specification. TT Earthing Specifications are available where required. Full bespoke customisation is available to match your requirements. Please speak to a member of the team to find out more.

Plug & Play

Our Victory Range features an advanced plug-and-play system that significantly speeds up on-site installation. By integrating innovative WAGO Termination Components, the system simplifies the process for electricians: they only need to remove one panel within the enclosure, connect the Electric Vehicle Chargers, and terminate.

- ✓ **Enhanced Safety:** Minimize on-site risk for electricians by reducing the need for complex wiring.
- ✓ **Rapid Installation:** Streamlines the setup process, reducing overall time and cost on site.
- ✓ **Highly Adaptable:** Our innovative Plug & Play System is highly adaptable, depending on your power requirements.



Versatile Solutions

Whether you're working on a small-scale installation or a larger project, our EV Feeder Pillars offer a wide range of sizes and specifications to meet your needs. Designed to accommodate various project requirements, the Victory 200 is the most compact option in our lineup, supporting EV chargers from 7.4kW up to 50kW.

30+ Cabinet
Variants

35+ Years
Experience

Victory **100**

Victory **200**

Victory **300**

Victory **400**

Victory **500**

Victory **600**

The whole Victory Range has a huge variety of different specifications, ensuring we meet your projects requirements exactly. Our competitive pricing, as well as our innovative solutions, allow us to offer a bespoke service.

Each Feeder Pillar in the Victory Range can be custom-designed and manufactured to meet all your requirements. Our in-house design and fabrication teams are industry experts with years of experience in enclosure manufacturing.





Turn-Key Solution

As a managed service, ICEE-EV, in partnership with our parent company, offer Planning, Surveying, Installation and Maintenance of our Victory Range, as well as a range of Electric Vehicle Charge Points.

We are UK OZEV (Office for Zero Emissions Vehicles) Approved Installers, meaning we can install both AC & DC Chargers, while allowing customers to apply for grant funding.

- Full Turn-Key Service Offering
- Flexible Packages
- Fully Funded, Part Funded and Joint Ownership Partnerships Available